

Ersatzteil - Liste

Limpar

Radial 85

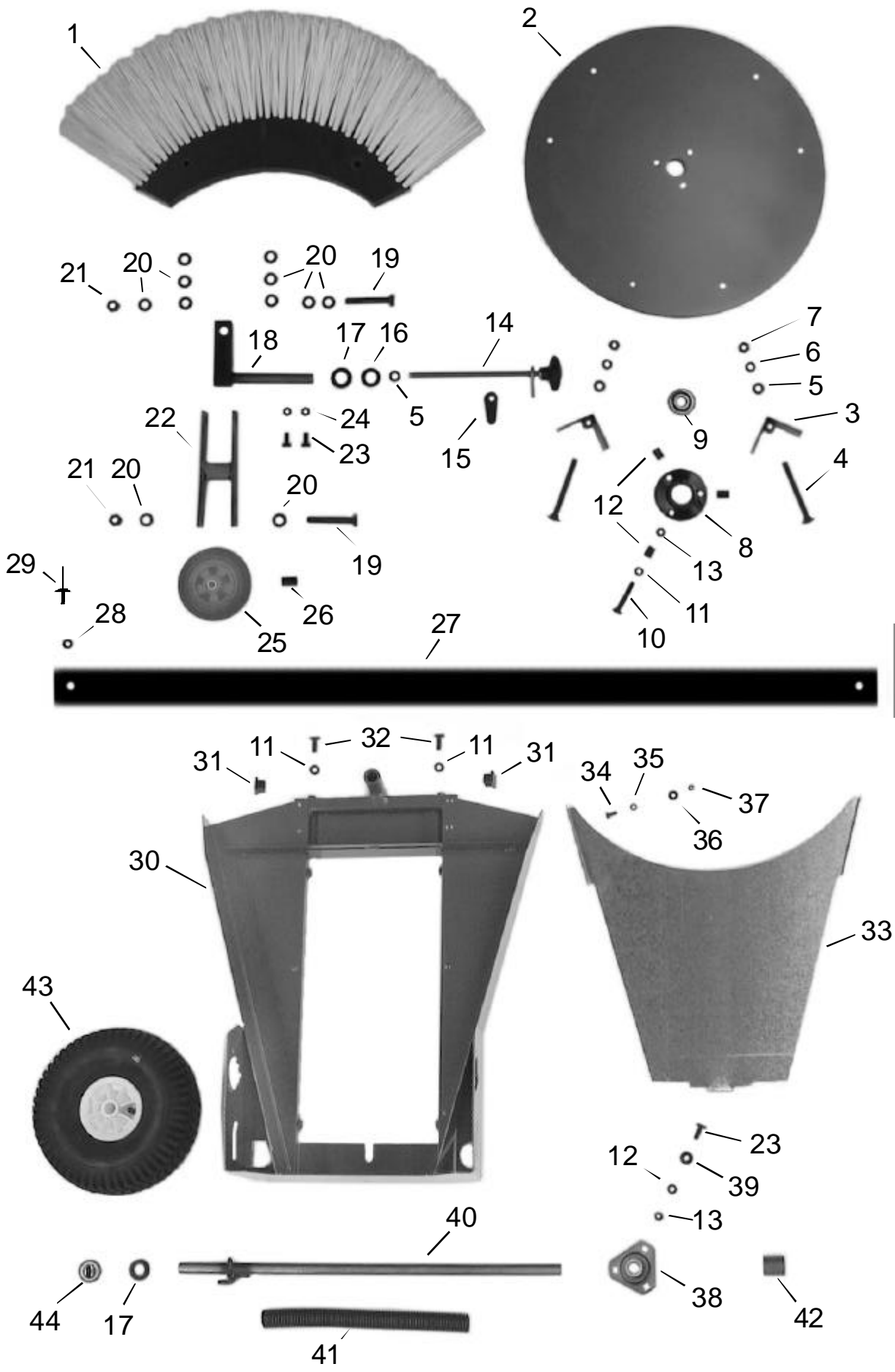


4F Maschinenteknik GmbH
Am Gasspeicher 6
D - 49453 Rehdén

Tel.: 05446-997040

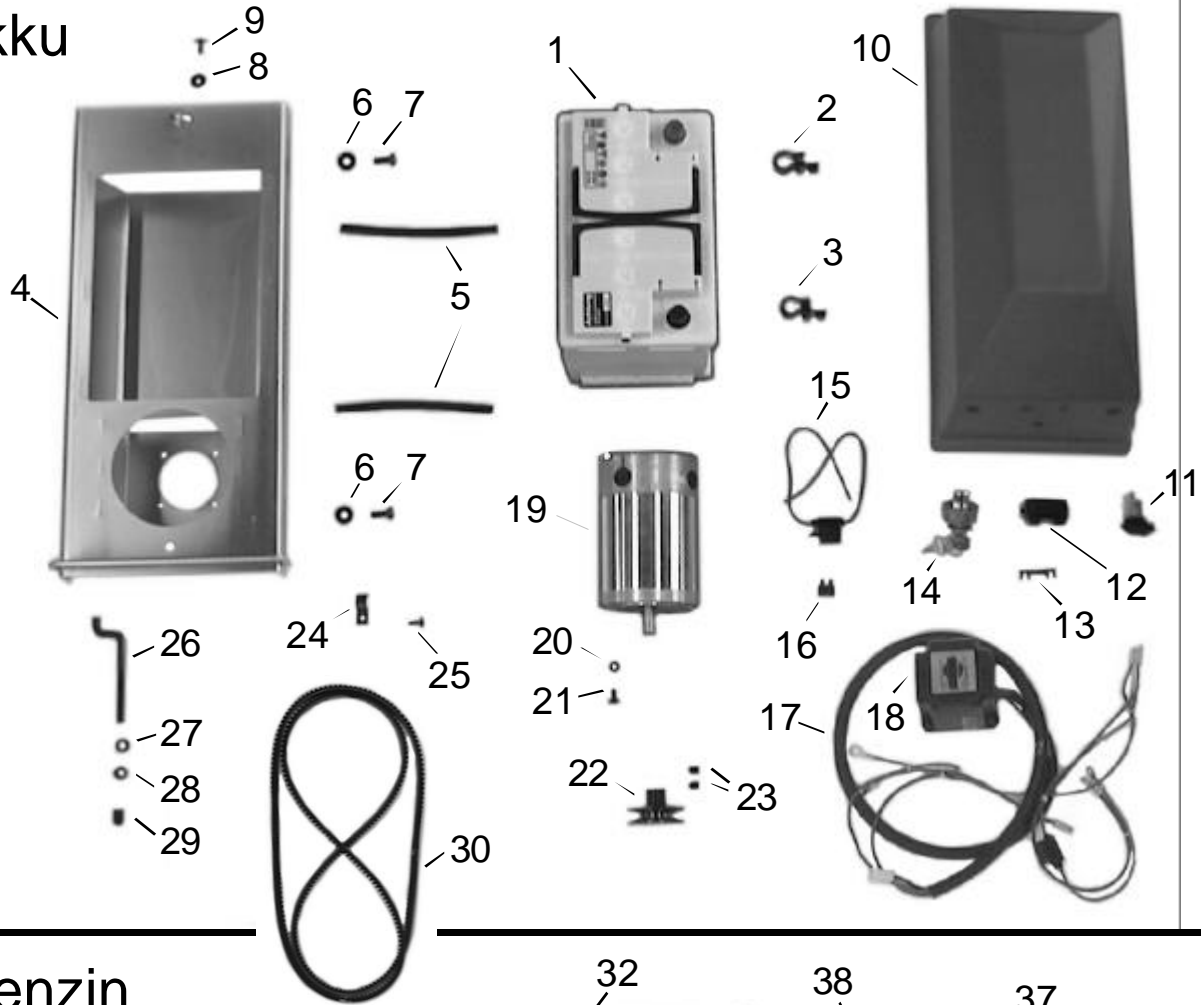
Fax: 05446-997042

e-mail: info@4-f.de

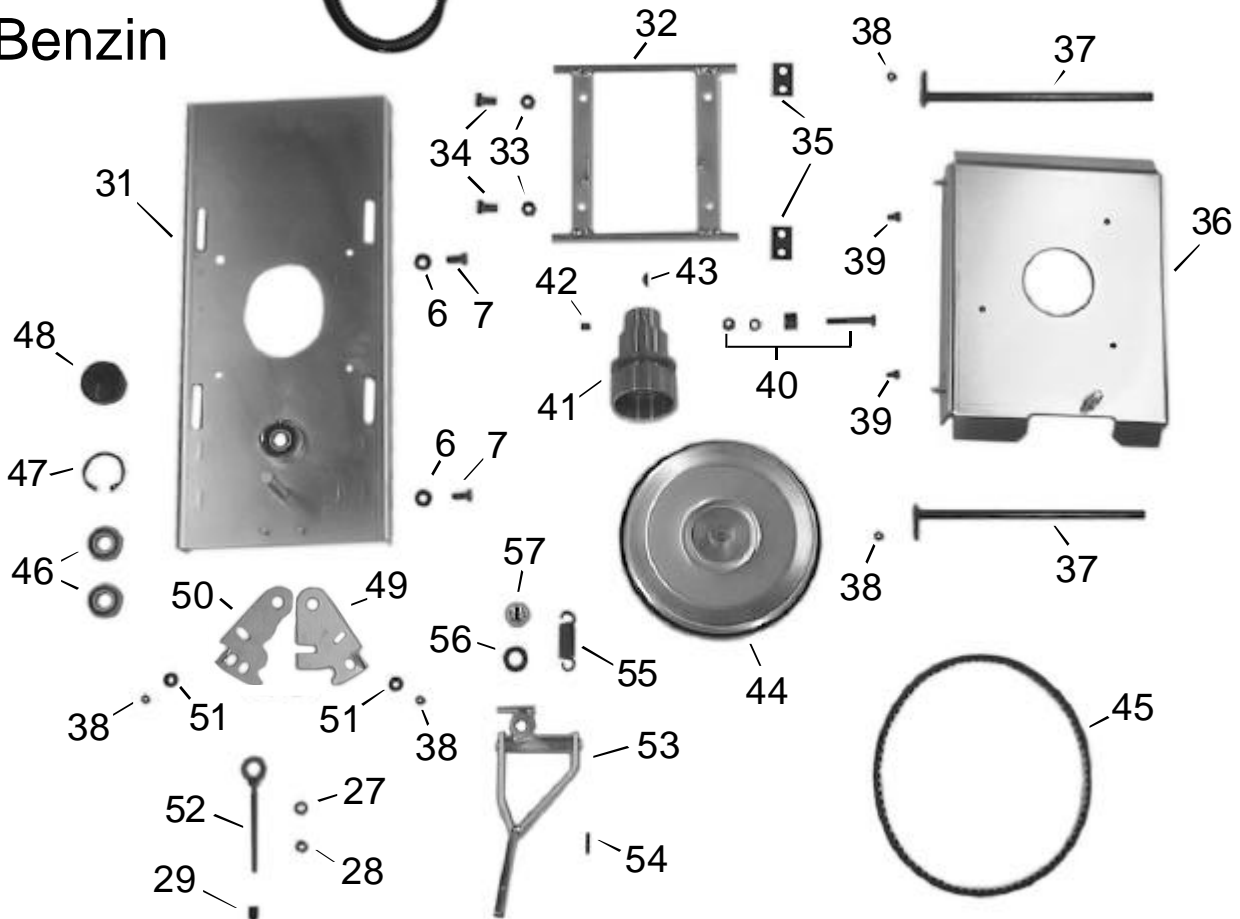


| Limpar Radial 85 | | | Ersatzteil-Liste | | | Tafel 1 | | |
|------------------|-------------|-----------------------------|------------------|-------------|-------------------|---------|--|--|
| Pos. | Artikel-Nr. | Bezeichnung | Pos. | Artikel-Nr. | Bezeichnung | | | |
| 1 | 4HM-R04 | Bürste(3 Segmente) | 37 | 4HR-C08 Z1 | Stopmutter M6 | | | |
| 2 | 4KK-A10 | Teller-K-Scheibe | 38 | 4HA-Y20 | Y-Lager 20 | | | |
| 3 | FKH-121 Z | Distanzwinkel | 39 | 4HW-D08 Z1 | Scheibe, dick E 8 | | | |
| 4 | 4HO-I70 Z1 | Schloß-Schr. M10x110 | 40 | FKH-108 | Fahrachse | | | |
| 5 | 4HW-A10 Z1 | Scheibe E 10,5 | 41 | 4KC-B27 | Achsverkleidung R | | | |
| 6 | 4HW-F10 Z1 | Federring M10 | 42 | 4DJ-E05 Z | DistanzstückR | | | |
| 7 | 4HR-A10 Z1 | Mutter M10 | 43 | 4HN-G02 | Luftrad 4.00-4 | | | |
| 8 | 4AZ-303Z | Flanschlager20 (inkl.Lager) | 44 | 4KC-A39 | Klemmkappe20 | | | |
| 9 | 4HA-A20 | Kugellager (60042RS) | | | | | | |
| 10 | 4HO-C18 Z1 | 6kt-Schraube M8x40 | | | | | | |
| 11 | 4HW-A08 Z1 | Scheibe E 8,3 | | | | | | |
| 12 | 4DM-A02 | HülseBÜ | | | | | | |
| 13 | 4HR-C08 Z1 | Stopmutter M8 | | | | | | |
| 14 | FKH-213 | Stützradspindel | | | | | | |
| 15 | 4DA-I01 Z | Konterlasche | | | | | | |
| 16 | 4HW-C20 Z1 | Scheibe, schmal E 21 | | | | | | |
| 17 | 4HW-A20 Z1 | Scheibe E 21 | | | | | | |
| 18 | FKH-103 | RadführungR | | | | | | |
| 19 | 4HO-C69 Z1 | 6kt-Schraube M12x80 | | | | | | |
| 20 | 4HW-A12 Z1 | Scheibe E 12 | | | | | | |
| 21 | 4HR-C12 Z1 | Stopmutter M12 | | | | | | |
| 22 | FKH-104Z | Radschwinge | | | | | | |
| 23 | 4HO-A14 Z1 | 6kt-Schraube M8x20 | | | | | | |
| 24 | 4HR-A08 Z1 | MutterM8 | | | | | | |
| 25 | 4HN-G05 | Rad 125 (inkl.Hülse) | | | | | | |
| 26 | 4DM-X01 | Radhülse | | | | | | |
| 27 | 4KK-A12 | Blendenring (Kunststoff) | | | | | | |
| 28 | 4HW-B05 Z1 | Scheibe, groß E 5 | | | | | | |
| 29 | 4HY-B04 S1 | Blindniet (Al4,8x17) | | | | | | |
| 30 | FKH-101 | Gehäuse R | | | | | | |
| 31 | 4HJ-B051 | Quadratstopfen | | | | | | |
| 32 | 4HO-A13 Z1 | 6kt-SchraubeM8x16 | | | | | | |
| 33 | 4DA-C41Z | Unterblech | | | | | | |
| 34 | 4HO-A08 Z1 | 6kt-SchraubeM6x16 | | | | | | |
| 35 | 4HW-A06 Z1 | Scheibe E 6 | | | | | | |
| 36 | 4HW-B06 Z1 | Scheibe, groß E 6 | | | | | | |

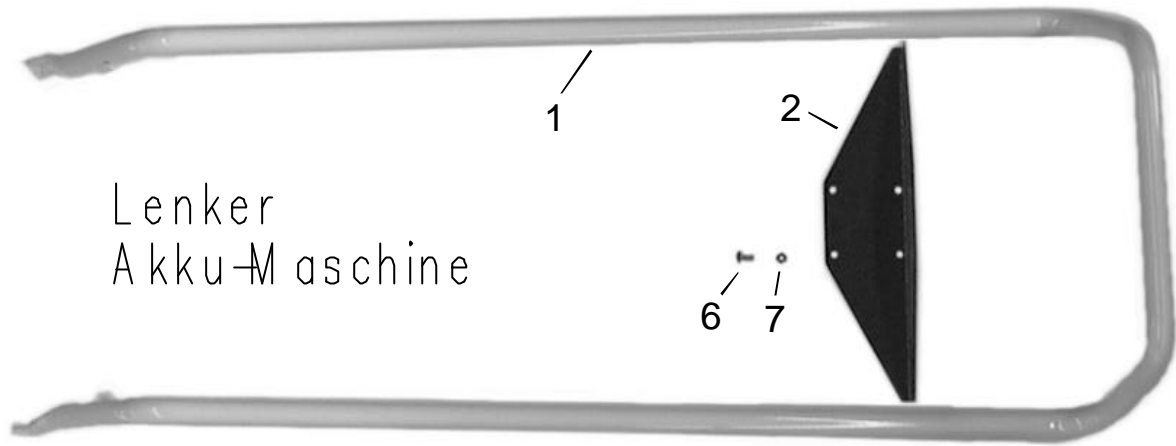
Akku



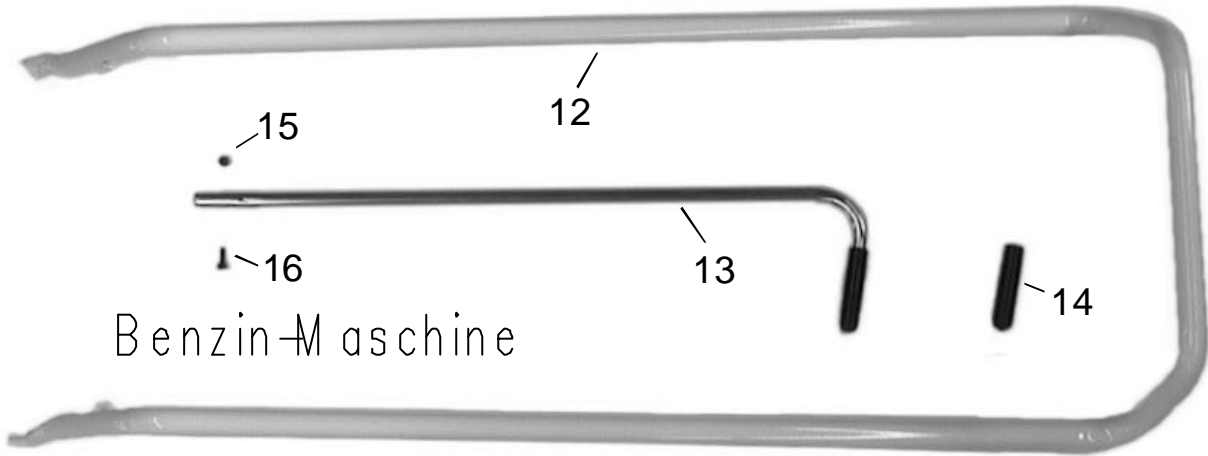
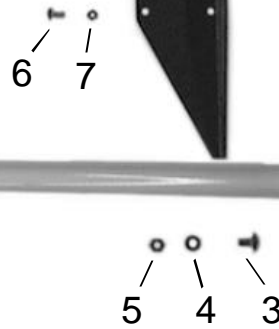
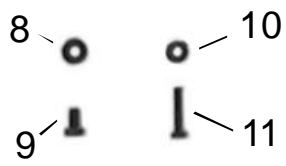
Benzin



| Limpar Radial 85 | | | Ersatzteil-Liste | | | Tafel 2 | | |
|------------------|-------------|---|------------------|-------------|--|---------|--|--|
| Pos. | Artikel-Nr. | Bezeichnung | Pos. | Artikel-Nr. | Bezeichnung | | | |
| 1 | 4KO-B02 | Spezial-R-Batterie12V | 37 | FKH-110 Z | Lagerzapfen,oben | | | |
| 2 | 4KO-S11 | Polklemme + | 38 | 4HR-C06 Z1 | Stopmutter M6 | | | |
| 3 | 4KO-S12 | Polklemme - | 39 | 4HJ-B01 1 | Zargenpuffer | | | |
| 4 | FKH-106 Z | Motorkonsole ER | 40 | 4AZ-S22 | Motorschrauben Set <small>(alle Mot.)</small> | | | |
| 5 | 4HK-P01 | Kantenschutz 16cm | 41 | 4AZ-A29Z | KeilriemenscheibeRB | | | |
| 6 | 4HW-D08 Z1 | Scheibe, dick E 8,4 | 42 | 4KC-A04 1 | GewindestiftM8x10 | | | |
| 7 | 4HO-A14 Z1 | 6kt-Schraube M8x20 | 43 | 4KH-S01 | Scheibenfeder | | | |
| 8 | 4HK-E01 1 | Gummischeibe | 44 | FKH-209 | 3K-Reibrad | | | |
| 9 | 4HO-S47 Z1 | Bordwand-Schr. M8x15 | 45 | 4HB-X06S | Keilriemen <small>(alleBenzin-Motoren)</small> | | | |
| 10 | 4HJ-X14 | HaubeER | 46 | 4HA-A20 | Kugellager 20 <small>(60042RS)</small> | | | |
| 11 | 4KO-S03 | Steckdosem.D. | 47 | 4HU-I42 | Sicherungsring 42 | | | |
| 12 | 4KO-A05 | Sicherungshalter50 A | 48 | 4HJ-G06 | Kappe50 | | | |
| 13 | 4KO-A04 | Blechsicherung50A | 49 | 4DA-F36 Z | Stellblech,rechts | | | |
| 14 | 4KO-S01 | Schlüsselschalter | 50 | 4DA-F35 Z | Stellblech, links | | | |
| 15 | 4KO-A01 | Hängesicherung | 51 | 4HW-B06 Z1 | Scheibe, groß E 6,5 | | | |
| 16 | 4KO-A03 | FI-Stecksicherung10A | 52 | FKH-111 Z | Spannschraube | | | |
| 17 | 4KO-G04 | Kabelbaum ER <small>(inkl.Pos.18)</small> | 53 | FKH-116 Z | Schaltgelenk RB | | | |
| 18 | 4KO-S09 | R/L-Schalter | 54 | 4HX-F20 1 | Spannhülse5x20 | | | |
| 19 | FKH-221 | E-Motor ER | 55 | 4HI-A01Z | Zugfeder <small>(verzinkt)</small> | | | |
| 20 | 4HW-F06 Z1 | FederringM6 | 56 | 4HW-A16 Z1 | Scheibe E 17 | | | |
| 21 | 4HO-A07 Z1 | 6kt-Schraube M6x12 | 57 | 4KC-A41 | Klemmkappe 16 | | | |
| 22 | 4AZ-Z01 Z | Keilriemenscheibe ZR | | | | | | |
| 23 | 4KC-A38 1 | GewindestiftZAM6x12 | | | | | | |
| 24 | 4KC-A40 1 | Kabelschelle15 | | | | | | |
| 25 | 4KC-A21 1 | Blechschaube | | | | | | |
| 26 | 4DC-D10Z | Zugstab | | | | | | |
| 27 | 4HW-A08 Z1 | Scheibe E 8,4 | | | | | | |
| 28 | 4HR-C08 Z1 | StopmutterM8 | | | | | | |
| 29 | 4HJ-G07 | Kappe 8 | | | | | | |
| 30 | 4HB-Z14 S | Keilriemen Bürste <small>(alleMod.)</small> | | | | | | |
| 31 | FKH-107 Z | Motorkonsole RB | | | | | | |
| 32 | FKH-109 Z | Lagerrahmen | | | | | | |
| 33 | 4HR-C08 Z1 | StopmutterM8 | | | | | | |
| 34 | 4HO-A24 Z1 | 6kt-SchraubeM10x25 | | | | | | |
| 35 | 4HJ-E02 | Schwenklasche <small>(Kunststoff)</small> | | | | | | |
| 36 | FKH-114Z | MotorplatteRB | | | | | | |



Lenker
Akku-Maschine



Benzin-Maschine

